



TECHNICAL INFORMATION

| | |
|------------------------|----------------------|
| Watts: | 36 |
| Lumens: | 4320 |
| Input Power: | AC:200-240V, 50/60Hz |
| Long Life: | 20,000 Hours |
| Unit Color: | Milky |
| Body Type: | ABS+PC |
| PF: | >0.9 |
| LED Chip Type: | SMD-Samsung Chip |
| CRI: | >80 |
| Operation Temperature: | -20°C to +40°C |
| Beam Angle: | 120° |
| Color: | 6400K |
| Dimension: | 1200x78x72mm |
| lumens per watt: | 120 |
| Linkable: | Upto 10 Units |
| Type: | Milky Cover |

PRO MILKY COVER SERIES | LED LIGHTING

V-TAC's LED Lighting range includes lighting that fulfills the needs of various end-users and industries, offering efficient and innovative products that provide modern solutions at an affordable price. We are proud to also provide extended multi-year warranty on our products, as well as detailed support.

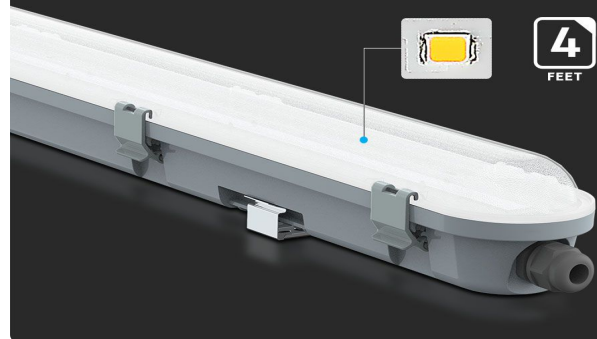
One brand, endless solutions..

SKU: 20206 - 1406 1669

[View more details](#)

SMD LED'S

Provided by Samsung



IP65
RATING



3 YEAR
WARRANTY



IK 06



CRI > 80



120
Lumen/W

FEATURES

- Waterproof Fitting designed with Lumen efficiency 120LM/W
- Using high power SMD-Samsung Chip technology which makes it more reliable and durable
- Strong and sturdy ABS+PC body
- Complete protection from water, dust and corrosion - IP65 Rated
- Designed for maximum efficiency & minimal glare
- Suitable for parking lots, warehouses, garages, storage docks, workshops etc.



PACKAGING

Gross Weight (Kgs): 1.28
Unit CBM: 0.010088
Dimension: 1200x78x72mm

MASTER BOX PACKAGING

Box Qty: 12

LISTING DETAILS

Commodity Code: 9405104090
EanCode: 3800157657778