

TECHNICAL INFORMATION

Watts:	360
Input Power:	AC:200-240V, 50Hz
Body Type:	Metal
Dimmable:	No
Dimension:	208x82x32mm
Output Voltage:	DC:12V
Output Current:	30A

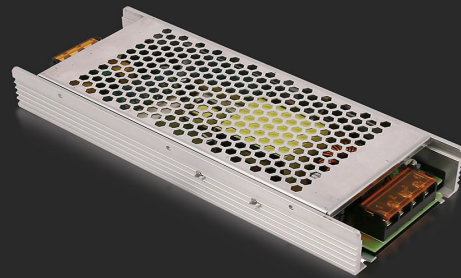
METAL POWER SUPPLY | LED LIGHTING

V-TAC's LED Lighting range includes lighting that fulfills the needs of various end-users and industries, offering efficient and innovative products that provide modern solutions at an affordable price. We are proud to also provide an extended multi-year warranty on our products, as well as detailed support.

One brand, endless solutions..

SKU: 3274 - 1583 2938

[View more details](#)



DC:12V



FEATURES

- Metal drivers that are compatible with all V-TAC Strip lights, LEDs etc.
- Short circuit protection, overload protection and stable output voltage
- Built-in EMI Filter
- High efficiency and low temperature
- 100% load tested
- CE, ROHS and EMC approved



PACKAGING

Gross Weight (Kgs): 0.566
Unit CBM: 0.000792
Dimension: 208x82x32mm

MASTER BOX PACKAGING

Box Qty: 20
Qty Per Pallet: 700
Length (Box) mm: 40
Width (Box) mm: 90
Height (Box) mm: 220

LISTING DETAILS

Commodity Code: 8504409090
Ean Code: 3800157654449